

# CURRENT SCIENCE

Volume 112 Number 10

25 May 2017



1978 In this issue

## GUEST EDITORIAL

1979 The case for a broad undergraduate science degree  
Rajaram Nityananda

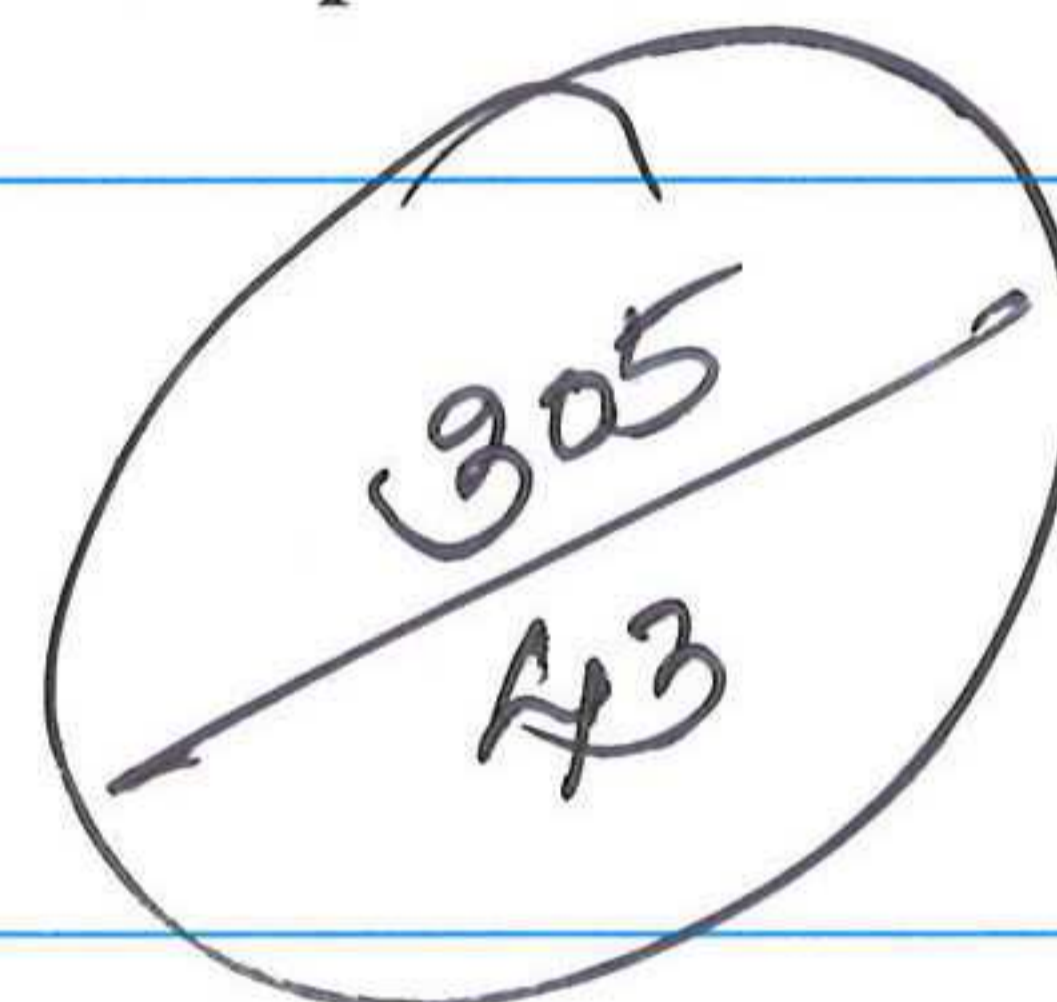
## CORRESPONDENCE

1981 Unsatisfactory scientific practice among the students of plant sciences  
H. A. Barbhuiya

## NEWS

1982 Science Last Fortnight

1986 Women in STEM disciplines  
Anitha Kurup, Leya Mathew and Tanya Singh



## COMMENTARY

1988 An area-wide approach to pink bollworm management on *Bt* cotton in India – a dire necessity with community participation  
Mohan, Komarlingam S.

1990 Plant communication: an unresolved mystery  
Hridya Hemachandran, C. George Priya Doss and Ramamoorthy Siva

## SCIENTIFIC CORRESPONDENCE

1992 Non-*Bt* seeds provided by seed companies in India – are they suitable as refuge for *Bt*-cotton?  
S. Kranthi, U. Satija, P. Pusadkar, Rishi Kumar, C. S. Shastri, S. Ansari, H. B. Santosh, D. Monga and K. R. Kranthi

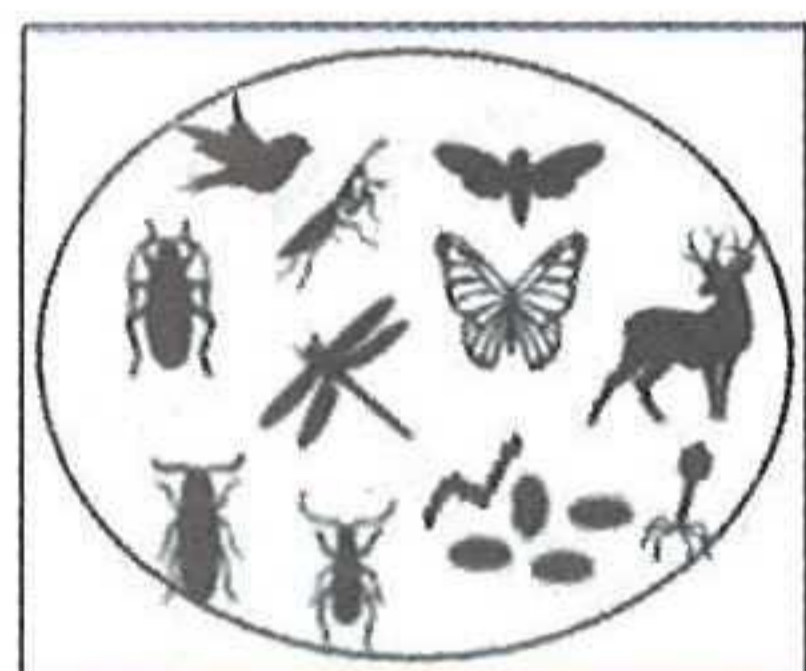
1994 Incidence of apomixis in sea buckthorn (*Hippophae rhamnoides* L.), a dioecious taxon of immense economic importance  
Amjad Ali and Veenu Kaul

## GENERAL ARTICLES

1997 An innovative approach for delivering academic writing courses  
Mihaela Aluas, Camelia Moraru, Markus Rheindorf, Birgit Huemer, Claudiu Filip, Andrei Kelemen and Rodica Loana Lung

2008 Advances made in understanding the effects of arsenic exposure on humans  
Subhajit Das Sarma, Afaq Hussain and Jayasri Das Sarma

2016 Implantation of *Heterorhabditis indica*-infected *Galleria* cadavers in the soil for biocontrol of white grub infestation in sugarcane fields of western Uttar Pradesh, India  
Sharad Mohan, Akanksha Upadhyay, Arohi Srivastava and K. Sreedevi





#### REVIEW ARTICLE

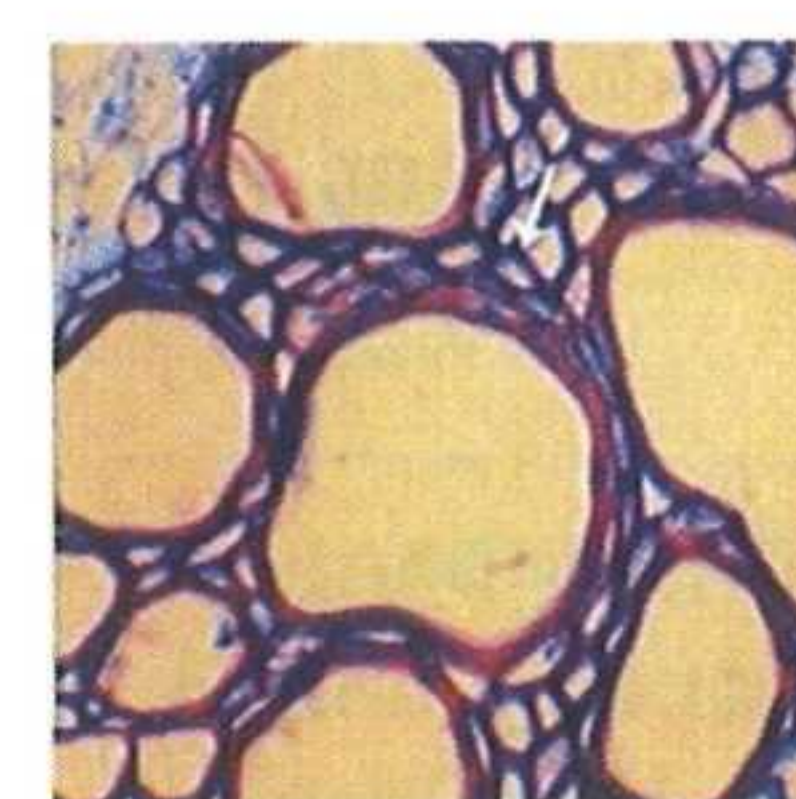
- 2021 **Microfluidics: a boon for biological research**  
Karthik Mahesh and Sravanti Vaidya

#### RESEARCH ARTICLES

- 2029 **Phylogeny and genetic variation within population of *Tachypleus gigas* (Müller, 1785)**  
Rengaiyan Periasamy, Baban Ingole and Ram Murthi Meena
- 2034 **Interactive effects of EDTA and oxalic acid on chromium uptake, translocation and photosynthetic attributes in Indian mustard (*Brassica juncea* L. var. Varuna)**  
Durga Singh, Ashish Agnihotri and Chandra Shekhar Seth
- 2043 **Remote sensing-derived spectral vegetation indices and forest carbon: testing the validity of models in mountainous terrain covered with high biodiversity**  
Pradeep Kumar and M. K. Ghose
- 2051 **Lemon cv. Assam lemon (*Citrus limon* Burm.) quality and soil-leaf nutrient availability affected by different pruning intensities and nutrient management**  
Arkendu Ghosh, K. Dey, N. Bhowmick, S. K. Ghosh, S. Bandyopadhyay, P. S. Medda and A. Ghosh
- 2066 **Assessment of climate change impact on rice using controlled environment chamber in Tamil Nadu, India**  
V. Geethalakshmi, K. Bhuvanawari, A. Lakshmanan and Nagothu Udaya Sekhar
- 2073 **Population differentiation of wheat leaf rust fungus *Puccinia triticina* in South Asia**  
Pramod Prasad, S. C. Bhardwaj, O. P. Gangwar, Subodh Kumar, Hanif Khan, Shravan Kumar, H. C. Rawal and T. R. Sharma

#### RESEARCH COMMUNICATIONS

- 2085 **Vision screening results in a cohort of Bhopal gas disaster survivors**  
Prem Nandhini Satgunam and Leonid Chindelevitch
- 2089 **Composition and morphology study of acid-digested pond ash**  
Ritesh Kumar, Sadanand Sharma and Khem Singh
- 2095 **Assessment of hailstorm damage in wheat crop using remote sensing**  
S. K. Singh, Rajat Saxena, Akhilesh Porwal, Neetu and S. S. Ray
- 2100 **Vulnerability of Indian Central Himalayan forests to fire in a warming climate and a participatory preparedness approach based on modern tools**  
Subrat Sharma and Harshit Pant
- 2106 ***Parthenium hysterophorus*: low cost substrate for the production of polyhydroxyalkanoates**  
Poorna Chandrika Sabapathy, Sabarinathan Devaraj and Preethi Kathirvel
- 2112 **Histological localization of fungal endophytes in healthy tissues of *Adhatoda vasica* Nees**  
Yash Mishra, Amla Batra and Madan Mohan Sharma
- 2115 **Seasonal variation in nearshore wave characteristics off Cuddalore, Southeast coast of Tamil Nadu, India**  
Basanta Kumar Jena, Sisir K. Patra, K. Jossia Joseph and K. M. Sivakholundu



- 2122 **Mineralogy of the Manipur Ophiolite Belt, North East India: implications for mid-oceanic ridge and supra-subduction zone origin**  
Thungyani N. Ovung, Jyotisankar Ray, Xueming Teng, Biswajit Ghosh, Madhuparna Paul, Proloy Ganguly, Saradee Sengupta and Supriyo Das

- 2129 **Interactions of lion-tailed macaque (*Macaca silenus*) with non-primates in the Western Ghats, India**  
Joseph J. Erinjery, Honnavalli N. Kumara, K. Mohan and Mewa Singh

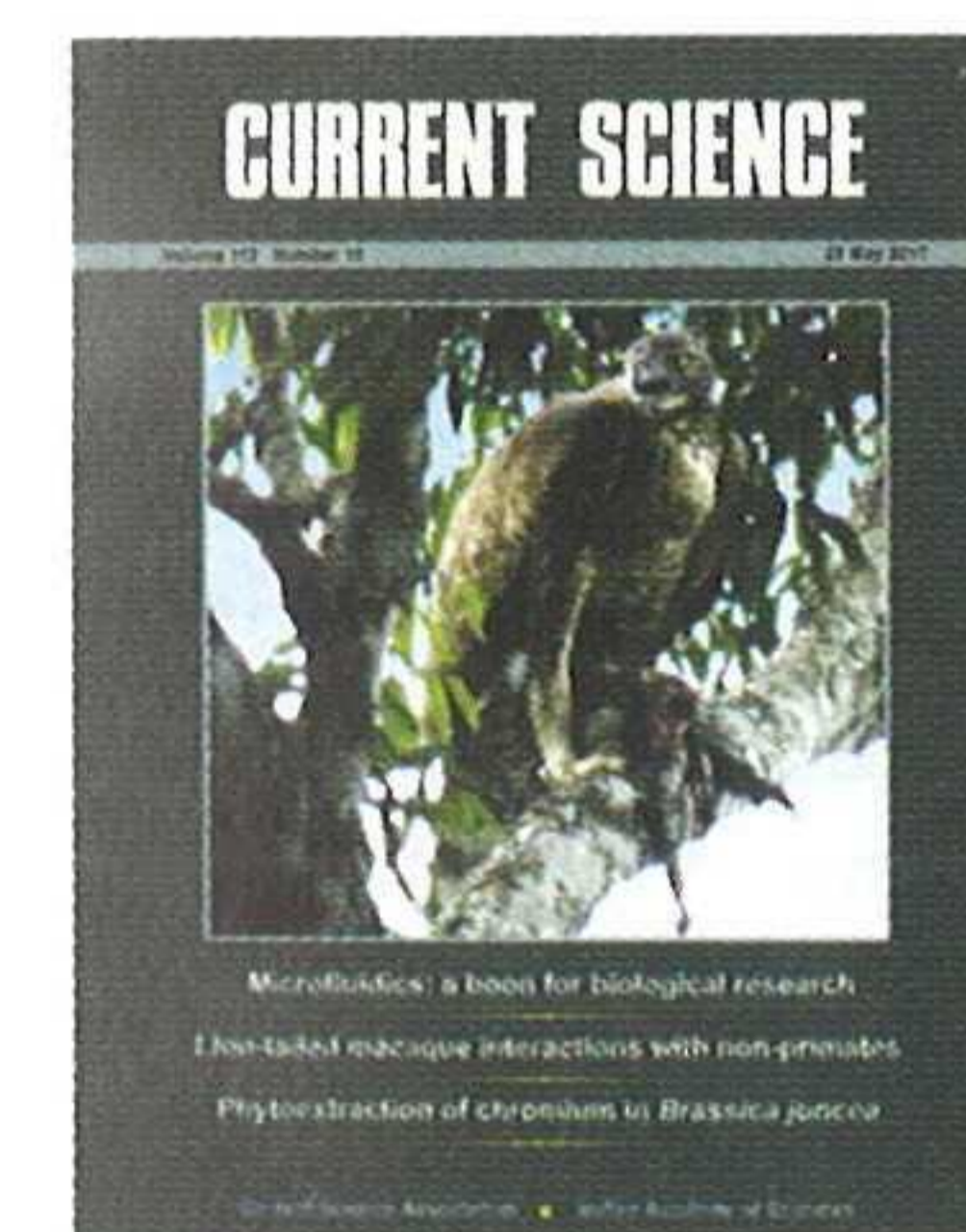
- 2134 **Interactive systems regarding global software development and offshoring**  
Ramzan Talib, Muhammad Yahya Saeed, Muhammad Awais and Kashif Hanif

#### BOOK REVIEWS

- 2139 **A Life in Science** by C. N. R. Rao, *reviewed by* Dinesh C. Sharma
- 2140 **Annual Review of Biomedical Engineering, 2016**, Martin L. Yarmush, James S. Duncan and Martha L. Gray (eds), *reviewed by* Siddharth Jhunjhunwala
- 2142 **Annual Review of Public Health, 2016**, Jonathan E. Fielding, Ross C. Brownson and Lawrence W. Green (eds), *reviewed by* Mario Vaz

#### PERSONAL NEWS

- 2144 **George Andrew Olah (1927–2017)**  
G. K. Surya Prakash and Thomas Mathew
- 2146 **M. Santappa (1923–2017)**  
T. Ramasami



- ◀ COVER. A mountain hawk-eagle with a lion-tailed macaque infant as prey. See page 2129.

Indexed in CURRENT CONTENTS/GEODATABASE/CHEMICAL ABSTRACTS/IndMED/SCOPUS/WEB OF SCIENCE