

# CURRENT SCIENCE

Volume 113 Number 3

10 August 2017

---

**362 In this issue**


---

**GUEST EDITORIAL**

- 363 An age-old question**  
Shobhana Narasimhan
- 

**CORRESPONDENCE**

- 365 Is India playing in the minor leagues in science?**, Gangan Prathap ■ **367 The *pollu* beetle in the Andaman Islands – concealing errors**, K. D. Prathapan ■ **368 Samuel Cnoll in Tranquebar and establishment of the first ‘pharmacy’ – Laboratorium Chymicum – in India in 1732**, Anantanarayanan Raman
- 

**NEWS**

- 370 Science Last Fortnight** ■ **374 The accelerating universe**, S. Priya ■ **376 Geoengineering and India**, G. Bala and Akhilesh Gupta ■ **377 Latest trends in quasicrystal research**, Nayuta Takemori and Alok Singh ■ **379 Shallow subsurface investigations for resource exploration and hazard estimation**, Girish Ch. Kothiyari, Sumer Chopra and M. Ravi Kumar
- 

**RESEARCH NEWS**

- 381 National Physical Laboratory demonstrates 1 g Kibble balance: Linkage of macroscopic mass to Planck constant**, Anil Kumar, Harish Kumar, V. N. Ojha, Shakti Singh, Girija Moona, Satish, P. K. Dubey, H. K. Singh, Goutam Mandal and D. K. Aswal
- 

**COMMENTARY**

- 383 Taking science to the people – easier said than done!**, P. J. Lavakare
- 

**TECHNICAL NOTE**

- 385 Synthetic Aperture Sonar image of seafloor**, Saju Varghese, A. Anil Kumar, G. Nagendran, V. Balachandrudu, Nilofer Sheikh, K. G. Mohan, Kailash Singh, B. Gopakumar, Rajesh Joshi and R. Rajasekhar
- 

**GENERAL ARTICLES**

- 386 A bibliometric profile of *Current Science* between 1961 and 2015**  
Peng Wang, Fangwei Zhu, Haoyang Song and Jianhua Hou
- 393 Drinking water sources in India: how safe is safe?**  
Siroop Chaudhuri and Mimi Roy
- 403 Calibration of two-dimensional variably saturated numerical model for groundwater flow in arid inland basin, China**  
Xiaomin Gu, Jingli Shao, Yali Cui and Qichen Hao
- 

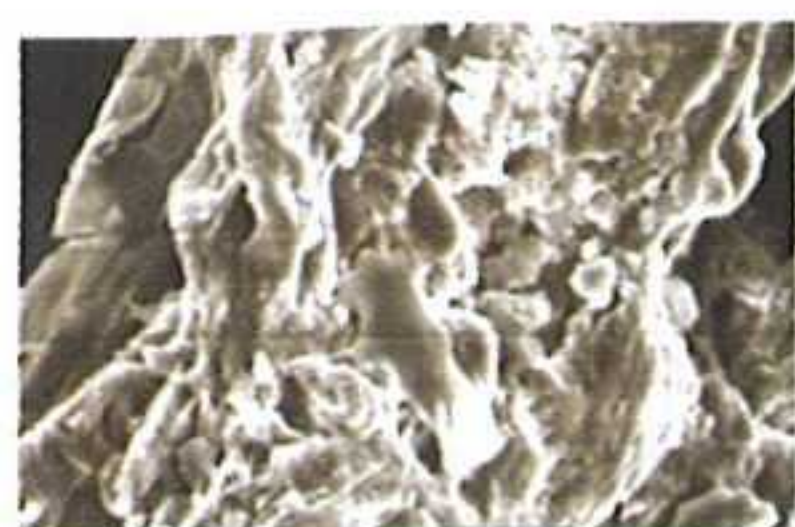
**REVIEW ARTICLE**

- 413 Evolution and progress in the application of radiation in cancer diagnosis and therapy**  
Gaurav Aggarwal and Suresh Kumar Aggarwal
- 

**RESEARCH ARTICLES**

- 422 Revisiting groundwater depletion and its implications on farm economics in Punjab, India**  
S. K. Srivastava, Ramesh Chand, Jaspal Singh, Amrit Pal Kaur, Rajni Jain, I. Kingsly and S. S. Raju
- 430 Geophysical assessment of vulnerability of surficial aquifer in the oil producing localities and riverine areas in the coastal region of Akwa Ibom state, southern Nigeria**  
N. J. George, J. G. Atat, I. E. Udoinyang, A. E. Akpan and A. M. George





- 439 **Exposure of *Eichhornia crassipes* (Mart.) Solms to salt water and its implications**  
Temjensangba Imchen, S. S. Sawant and Wasim Ezaz
- 444 **Fruit peel waste: characterization and its potential uses**  
Pranav D. Pathak, Sachin A. Mandavgane and Bhaskar D. Kulkarni

---

**RESEARCH COMMUNICATIONS**

- 455 **Comparative end-to-end evaluation of research organizations**  
Gangan Prathap
- 457 **Fluorescence spectral features of blood components of pregnant women**  
Sandhanasamy Devanesan, Mashaal AlShebly, Rudran Kalaivani, Krishnan Sivaji, Karim Farhat, Mohamad Saleh AlSalhi, Mohamed AlAtawi, Danny Rabah and Vadivel Masilamani
- 462 **Key technology network of BioMEMS through patent analysis**  
Shu-Hao Chang
- 468 **Performance of cathode catalysts for bio-electricity from paper recycling, wastewater-fed, microbial fuel cells**  
M. Radha and S. Kanmani
- 473 **Phosphorus accumulation associated with intense diagenetic metal-oxide cycling in sediments along the eastern continental margin of India**  
C. Prakash Babu and V. Ramaswamy
- 478 **Estimation of geomorphic threshold in permanent gullies of lateritic terrain in Birbhum, West Bengal, India**  
Sandipan Ghosh and Sanat Kumar Guchhait
- 486 **Mass balance estimation using geodetic method for glaciers in Baspa basin, Western Himalaya**  
G. Vinay Kumar, Anil V. Kulkarni, Anil Kumar Gupta and Parmanand Sharma
- 492 **Luminescence dating of Neolithic pottery in North East India**  
Sukanya Sharma and Pankaj Singh
- 496 **Antibacterial activity of protease hydrolysates isolated from *Silybum marianum***  
Jing Yue, Zhicheng Zhu and Xinhua Li
- 500 **Isolation and characterization of phosphorus solubilizing bacteria from manganese mining area of Balaghat and Chhindwara**  
Shikha Dixit, K. K. Appu Kuttan and Rahul Shrivastava

---

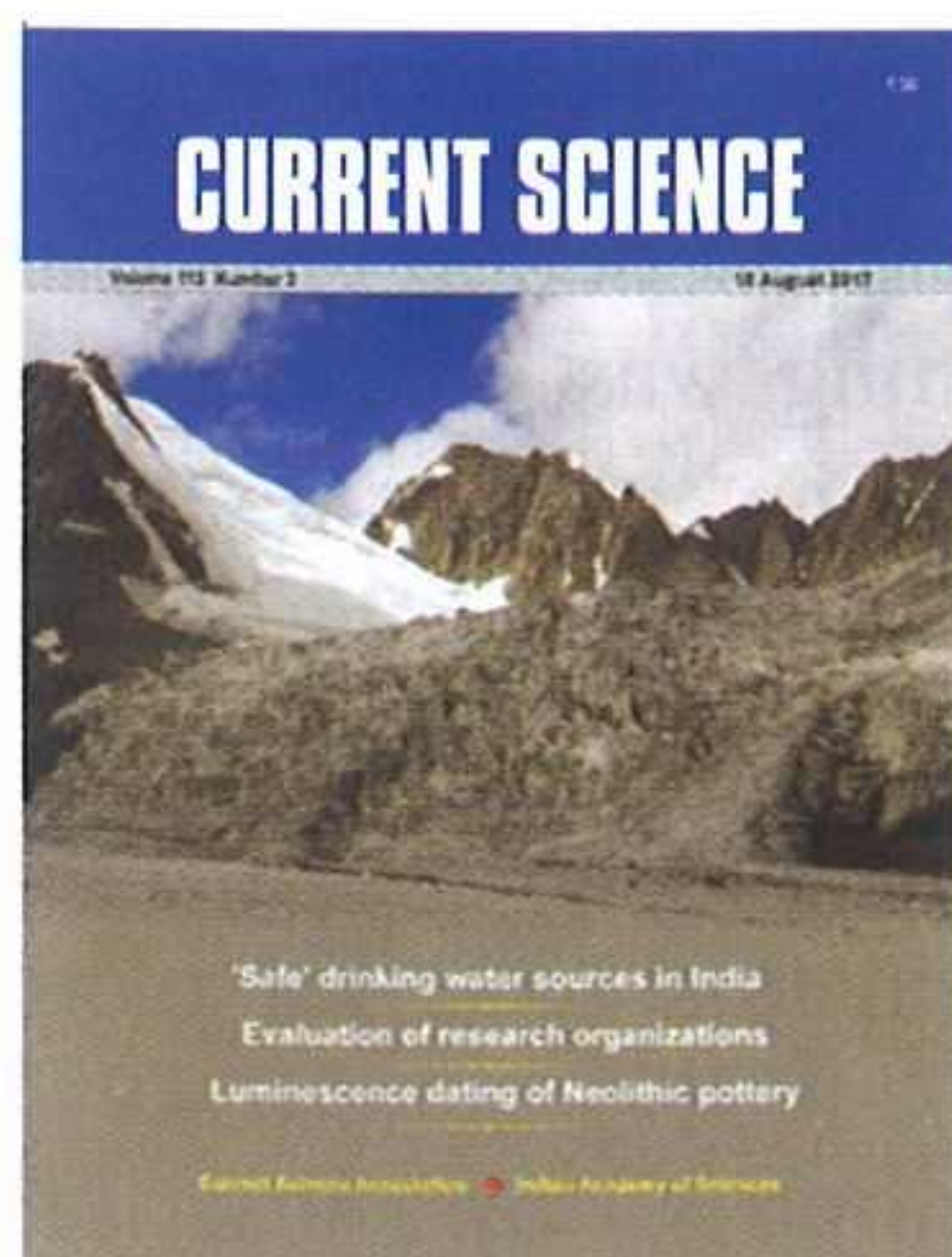
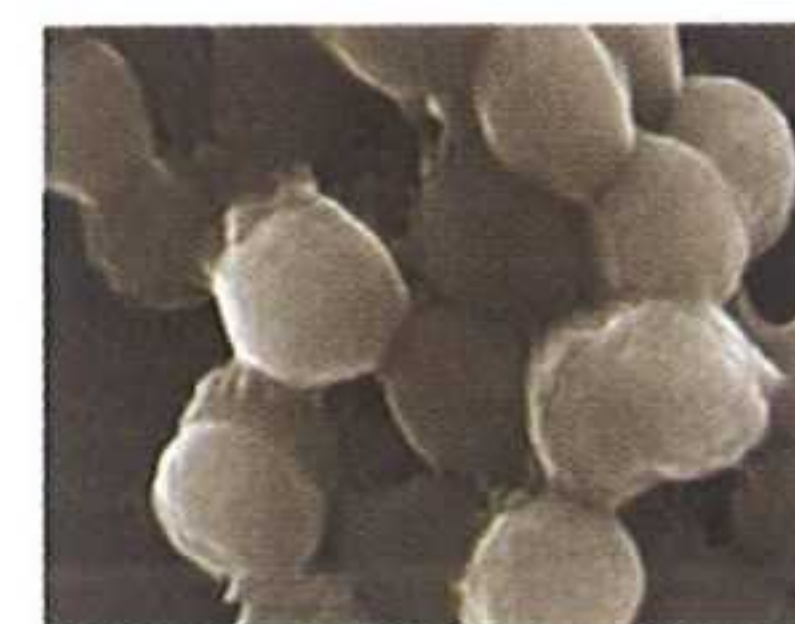
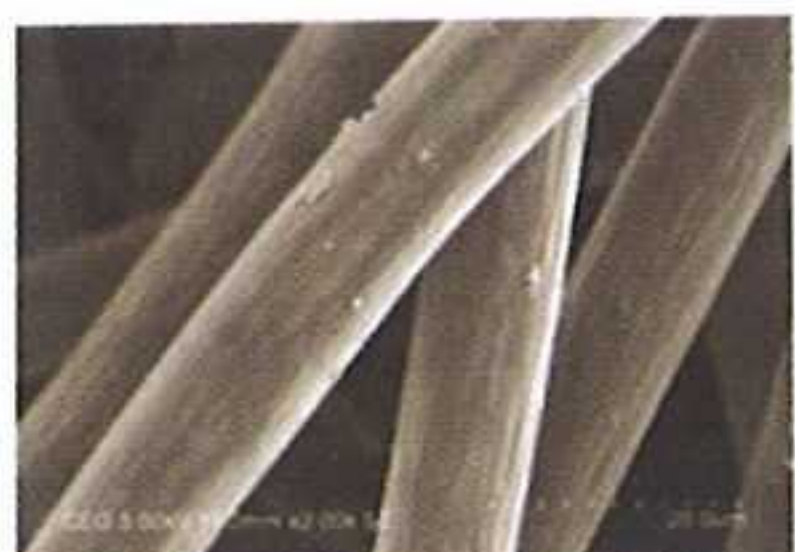
**BOOK REVIEWS**

- 505 **A Petrographic Atlas of Ophiolite: An Example from the Eastern India–Asia Collision Zone**, Naresh Chandra Ghose, Nilanjan Chatterjee and Fareeduddin, *reviewed by* Manoranjan Mohanty ■ 506 **Invertebrate Diversity and Conservation in the Western Ghats, India**, D. M. Priyadarsanan, M. Soubadra Devy, K. A. Subramanian, N. A. Aravind and N. K. Seena (eds), *reviewed by* R. J. Ranjit Daniels

---

**HISTORICAL NOTES**

- 508 **A historical perspective of Ganot's book in Maharashtra**, Siladitya Jana and Françoise Khantine-Langlois
- 



◀ COVER. Melt water resources of Himalayan glaciers in the current scenario. See page 486.

Indexed in CURRENT CONTENTS/GEOTitles/SCOPUS/IndMED/SCOPUS/  
WEB OF SCIENCE