



272
43

1386 In this issue

GUEST EDITORIAL

- 1387 In search of vaccines against malaria
V. S. Chauhan

CORRESPONDENCE

- 1389 Farm women and seeds: strengthening relation for sustaining agricultural productivity, Laxmi Priya Sahoo, Shivaji Argade and Ananda Chandra Sasamala ■
1390 Tea mosquito bug (*Helopeltis theivora*) and mealy bug (*Paraputo theaecola*) – new threats to large cardamom, H. Kalita, R. K. Avasthe, R. Gopi, Ashish Yadav and M. Singh ■
1392 Multi cob-bearing popcorn (*Puakzo*) maize: a unique landrace of Mizoram, North East, India, A. Ratankumar Singh, S. B. Singh, S. K. Dutta, T. Boopathi, Lungmuana, S. Saha, M. Thoithoi Devi and N. Hemanta Singh

NEWS

- 1394 Science Last Fortnight, Manish Kumar Tekam, Sarah Iqbal, Gita Madhu and K. P. Madhu ■
1396 The so-called non-coding RNAs are not really non-coding after all, Shree Chaitranjali Yadla and Utpal Nath ■
1397 Decadal climate variability and predictability, Syed Azharuddin and Muhammad Mubashar Dogar ■
1398 Asian urban environment and climate change, Julian Hunt, Johnny C. L. Chan and Jianping Wu

OPINION

- 1401 Towards managing nanotechnology-related water pollution in India
Arun Kumar, S. Baranidharan, Ashok K. Ganguli and Atul K. Mittal

COMMENTARY

- 1402 'Make in India': lessons from G. Suryan's NMR research
Amit Prasad
1405 Publications: time up to bell the cat
Vijayakumar Malepillil Vavachan

SCIENTIFIC CORRESPONDENCE

- 1407 Mass mortality of *Montipora digitata* (Scleractinia) in Vaan Island, Gulf of Mannar, southeast India
K. Diraviya Raj, G. Mathews, M. Selva Bharath and J. K. Patterson Edward
1408 Electric ray *Narcine timlei* (Torpediniformes: Narcinidae) from Chilika lagoon, Odisha, India
C. M. Roshith, R. K. Manna, V. R. Suresh, D. Panda, A. P. Sharma, A. Roy Chowdhury, M. Mukherjee and S. K. Banik
1411 Milk-derived epithelial cells are a potential source of donor genome for the production of buffalo (*Bubalus Bubalis*) cloned embryos
N. L. Selokar, M. Saini, H. Agrawal, A. K. Raja, A. A. Sahare, D. Priya, P. Palta, M. S. Chauhan, R. S. Manik and S. K. Singla



GENERAL ARTICLES

- 1414 **International collaboration among authors of *Current Science***
Olesia Iefremova, Daniel Sas and Marcin Kozak
- 1419 **Capturing the growth dynamics of science: a publication-based analysis**
Sujit Bhattacharya and Shilpa

REVIEW ARTICLES

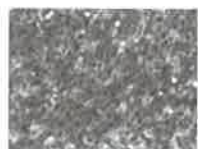
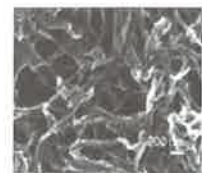
- 1426 **Various types of separation membranes**
Debasree Das, Anindya Datta and Aliasgar Qutub Contractor
- 1439 **Bacterial wilt and its management**
Shamayeeta Sarkar and Sujata Chaudhuri

RESEARCH ARTICLES

- 1446 **Multiplex real-time PCR-based detection and quantification of genetically modified maize events employing SYBR[®] Green I and TaqMan[®] chemistries**
Rajesh K. Bhoge, Rashmi Chhabra, Monika Singh, Muthukrishnan Sathiyabama and Gurinderjit Randhawa
- 1452 **Impact of emission mitigation on ozone-induced wheat and rice damage in India**
Sachin D. Ghude, C. K. Jena, G. Beig, Rajesh Kumar, S. H. Kulkarni and D. M. Chate
- 1459 **Validation of traditional weed control method through common salt application in the hill region of Nagaland**
Dibyendu Chatterjee, Rakesh Kumar, Rukuosietuo Kuotsu and Bidyut C. Deka
- 1468 **Statistical downscaling of multisite daily precipitation for Tapi basin using kernel regression model**
Sadhana Singh, S. Kannan and P. V. Timbadiya
- 1485 **Aqueous micellar solution to control non-solvent–solvent exchange during phase inversion process of polysulfone membrane preparation resulting in membranes of different pore structures**
Puyam S. Singh and Kripal Singh
- 1495 **‘Fish for all’ versus ‘fish of choice’ – growth, instability and stakeholders’ responses for enhancing fish production in major lakes of Kashmir**
Neha W. Qureshi, M. Krishnan and C. Sundaramoorthy
- 1505 **The possible effects of melatonin in *Cerastes cerastes gasperettii* venom-mediated toxicity and oxidative damage in mice**
Mohamed K. Al-Sadoon, Marwa M. S. Diab, Amira A. Bauomy, Ahmed E. Abdel Moneim and Bilal A. Paray
- 1513 **Host-specific spatial and temporal variation in culturable gut bacterial communities of dragonflies**
Ashwin Nair and Deepa Agashe
- 1524 **Comparison of Czech and Slovak independent research in the 21st century**
Dalibor Fiala and Yuh-Shan Ho

RESEARCH COMMUNICATIONS

- 1532 **Elevated plasma cytochrome *c* levels in patients with chronic obstructive pulmonary disease**
Xue Zhang, Diandian Li, Hao Wang, Yanqiu Wu and Fuqiang Wen
- 1536 **Water in the lunar interior**
A. Basu Sarbadhikari, K. K. Marhas, Sameer and J. N. Goswami



- 1539 **Carbon isotopic composition of suspended particulate matter and dissolved inorganic carbon in the Cochin estuary during post-monsoon**
P. S. Bhavya, Sanjeev Kumar, G. V. M. Gupta, K. V. Sudharma, V. Sudheesh and K. R. Dhanya
- 1544 **Estimating biological parameters of a coupled physical–biological model of the Indian Ocean using polynomial chaos**
Rashmi Sharma, Smitha Ratheesh and Sujit Basu
- 1550 **REE geochemistry of monazites from coastal sands between Bhimunipatnam and Konada, Andhra Pradesh, East coast of India**
K. Bangaku Naidu, K. S. N. Reddy, Ch. Ravi Sekhar, P. Ganapati Rao and K. N. Murali Krishna
- 1559 **Forage and security trade-offs by markhor *Capra falconeri* mothers**
Riyaz Ahmad, Charudutt Mishra, Navinder J. Singh, Rahul Kaul and Yash Veer Bhatnagar
- 1564 **Alkaline phosphatase activity in developmental stages of Asia I and Asia II-1 populations of whitefly, *Bemisia tabaci* (Gennadius)**
Namita Poddar and S. Subramanian

BOOK REVIEWS

- 1569 **The Science of Interstellar** by Kip Thorne, *reviewed by* Sushant Sharma ■ 1570 **Tectonic Inheritance in Continental Rifts and Passive Margins**, Achyuta Ayan Misra and Soumyajit Mukherjee, *reviewed by* Ripun Kumar Gogoi ■ 1571 **The Face of the Earth: The Legacy of Eduard Suess**, Thomas Hofmann, Günter Blöschl, Lois Lammerhuber, Werner E. Piller and A. M. Celâl Şengör, *reviewed by* Rasoul Sorkhabi

PERSONAL NEWS

- 1573 **Paramasivam Natarajan (1940–2016)**, P. Ramamurthy and R. Ramaraj
- 1574 **Charusita Chakravarty (1964–2016)**, N. Sathyamurthy
-



- ◀ COVER. The dragonfly *Pantala flavescens* (Globe skimmer), a widely distributed migratory species that is commonly found across India. It has a distinct and diverse gut microbial community. See page 1513. (Photo: Shantanu Joshi).

Indexed in CURRENT CONTENTS/GEOBASE/CHEMICAL ABSTRACTS and MED/SCOPUS/
WEB OF SCIENCE

