

985

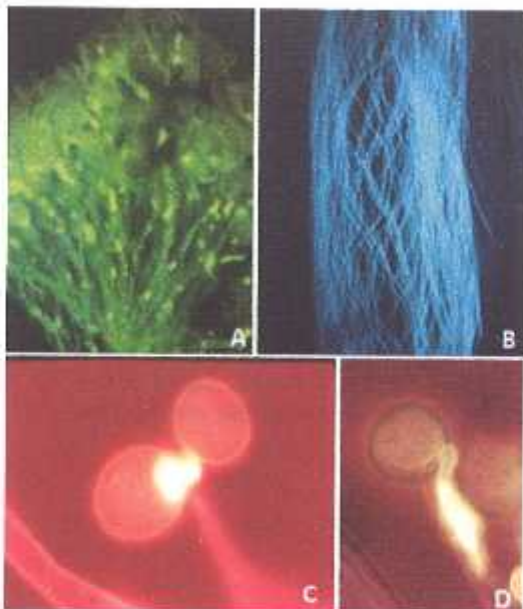


Inside Back Cover

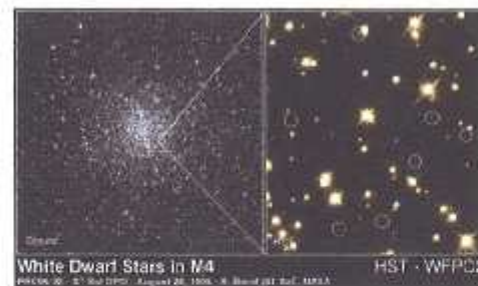
Flowering Trees
Credit: Raja K Swamy, IISc.

GENERAL ARTICLES

- 971 Lyman Spitzer: Life, Times, and Science**
Rajaram Nityaranda
- 985 Gas Between the Stars**
What Determines its Temperature?
Biman Nath
- 997 Exploring Freshwater Science**
Vidyadhar Atkore and Jagdish Krishnaswamy
- 1007 Fertilization in Flowering Plants**
Selection of the Male Partner is the Prerogative of the Maternal Parent
K R Shivanna



1007



971



Classroom

- A 1235711 Petalled Flower Soumyajit Jana 1019
- The RC Circuit: An Approach with Fourier Transforms 1029
Mitrajyoti Ghosh



Information & Announcements

1061

Nobel Prizes 2016

Front Cover



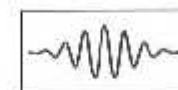
Foreground: Artist's impression of the Spitzer Telescope deployed in orbit. Background: A view towards the centre of our own Galaxy obtained with this telescope at a wavelength of 100 microns. This far infrared region of the spectrum reveals interstellar dust which plays an important role. Image courtesy: NASA (National Aeronautics and Space Administration, USA) and JPL (Jet Propulsion Laboratory, California Institute of Technology, USA).

Back Cover



Lyman Spitzer Jr.
(1914–1997)
Illustration: Subhankar Biswas

DEPARTMENTS



Editorial 965
Biman Nath



Science Smiles 967
Ayan Guha



Think it Over 1043
Solution to A Charged Particle in Perpendicular Electric and Magnetic Fields
B A Bhargava, Adithi Udupa and P Jayanth Vysanakere



Classics 1047
Astronomical Advantages of an Extra-Terrestrial Observatory
Lyman Spitzer, Jr.