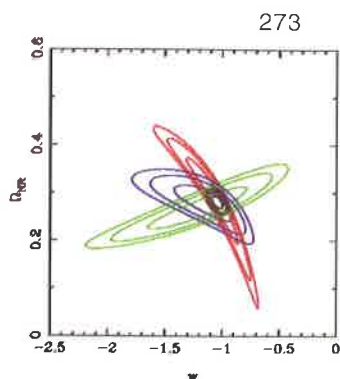


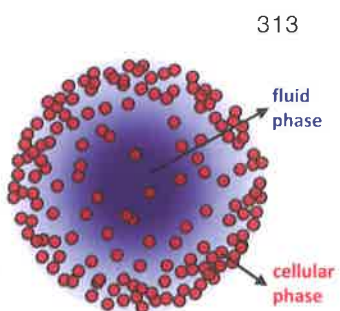
GENERAL ARTICLES



**263** **The Queen of Carbon!**  
*Mildred Dresselhaus (1930–2017)*  
Jayeeta Lahiri

**273** **The Mystery of Dark Energy and Some Revelations**  
H K Jassal

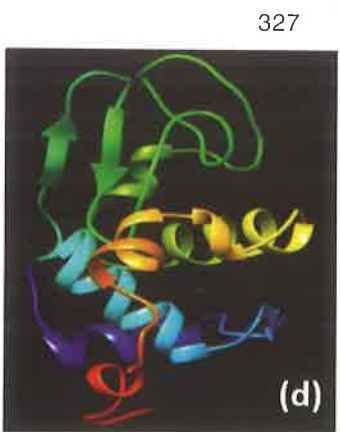
**289** **Cell Mechanosensing**  
*Response of Living Cells to Their Mechanical Environment*  
Rumi De



**297** **Enzyme Kinetics at the Molecular Level**  
Arti Dua

**313** **Mathematical Modelling and Avascular Tumour Growth**  
*Interdisciplinary Research*  
Jennifer A Flegg and Neela Nataraj

**327** **Protein Structure**  
Lalitha Guruprasad



**339** **Investigating the Primes**  
Kaneenika Sinha

**359** **(K)not So Abstract!**  
*Knots, Links, and Three-dimensional Manifolds*  
Swatee Naik

**371** **Depth-2 Threshold Circuits**  
*Provable Limitations*  
Meena Mahajan

**381** **What the Mother Gives...**  
Beena Pillai





### Face to Face

#### Striking the Perfect Equilibrium! 393

Supurna Sinha talks to Maria Cristina Marchetti



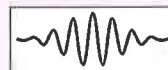
### Information & Announcements

#### Women in News! 399

Science Academies' Refresher Course in Statistical Physics 403

Science Academies' Refresher Course in Experimental Physics 404

## DEPARTMENTS



### Editorial 255

Riddhi Shah and Sudeshna Sinha



### Science Smiles 259

Rupali and Debamalya Dutta

### Inside Back Cover

Birds in the Backyard

Purple Sunbird

Text Credit: T N C Vidya

Photo Credit:

Shubha Bhat and Kaustubh Verma

### Front Cover



The cover image is a schematic illustration of a single-walled carbon nanotube, against the backdrop of a single layer of graphite.

### Back Cover



Mildred Dresselhaus  
(1930–2017)

Illustration: Subhankar Biswas

### Follow us on Facebook

Resonance, Journal of  
Science Education

@Resonance.IASc.Bng

