

# CURRENT SCIENCE

355  
43

Volume 116 Number 12

25 June 2019

1938 **In this issue**

**GUEST EDITORIAL**

1939 **Research and public universities**

S. Krishnaswamy

**CORRESPONDENCE**

1941 **Landscape of elite, research-intensive higher educational institutions in India – lessons from the Scimago Institutions Ranking**

Gangan Prathap

1942 **AYUSH research**

H. A. Ranganath; *Response by* S. C. Lakhotia, Kishor Patwardhan and Sanjeev Rastogi

**NEWS**

1942 **Science of the earth system**

N. V. Chalapathi Rao

1944 **Science Last Fortnight**

**IN CONVERSATION**

1948 **Andrew Paul Haines**

Amruta Nair and S. Priya

**OPINION**

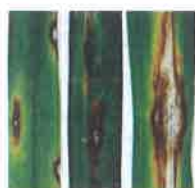
1951 **Are there limits to artificial intelligence?**

Subhash Kak

**COMMENTARY**

1953 **Tackling wheat rusts through resistance – success, challenges and preparedness**

S. C. Bhardwaj and G. P. Singh



**SCIENTIFIC CORRESPONDENCE**

1955 **A new growth medium for identification and isolation of *Pyricularia grisea* from finger millet (*Eleusine coracana* L. Gaertn.)**

K. R. Jadhao and G. R. Rout

1957 **New isolate of *Chilli leaf curl virus* on capsicum (Bell Pepper) under protected cultivation in Dharwad, Karnataka, India**

C. Channakeshava and M. S. Patil

1958 **Drowned valleys of Vaigai and Tamiraparani rivers in the Gulf of Mannar region, India**

SM. Ramasamy and J. Saravanavel

**GENERAL ARTICLES**

1961 **Into the fission valley of ‘magic nucleus’ polonium**

Tilak Kumar Ghosh



1965 **Information mining and visualization of highly cited papers on type-2 diabetes mellitus from ESI**

Tong Zhai and Lizhi Di

## RESEARCH ACCOUNT

- 1975 **Diverse behaviour of C-3 enolates derived from configurationally isomeric trimethyl 1-methylcyclohexane-1,2,3-tricarboxylates**  
S. N. Balasubrahmanyam

## RESEARCH ARTICLES

- 1987 **Pharmacological evaluation on antihypertensive activity of a novel AT1 angiotensin II receptor antagonist**  
Bei Tang, Helin Li, Ze Zhong, Huiping Wu, Hongwei Shen, Jiayuan Hu, Jianping Ma, Jinting Wu and Yuehui Wang
- 1993 **EEG signal-based movement control for mobile robots**  
Yumlembam Rahul and Rupam Kumar Sharma
- 2001 **Assessment of rib spalling hazard degree in mining face based on background subtraction algorithm and support vector machine**  
Lei Si, Zhongbin Wang, Xinhua Liu, Chao Tan and Rongxin Xu
- 2013 **Utilization of *Foeniculum vulgare* in herbal candy preparation and analysing its effect on the physico-chemical and sensory properties**  
Rekha Kailey, Kajal Dhawan, Prasad Rasane, Jyoti Singh, Sawinder Kaur, Bhanu Pratap Singh, Navneet Kaur and Damanpreet Kaur
- 2020 **Modelling soil cation exchange capacity in different land-use systems using artificial neural networks and multiple regression analysis**  
Gaurav Mishra, Juri Das and Magboul Sulieman
- 2028 **Effects of calcium on emergence and seedling growth of castor bean under salinity stress**  
Xiaoqian Guo, Guisheng Zhou, Guanglong Zhu and Xiurong Jiao
- 2036 **A prediction model for mining subsidence in loess-covered mountainous areas of western China**  
Fuquan Tang, Jiabin Lu and Pengfei Li
- 2044 **Does rise in temperature adversely affect soil fertility, carbon fractions, microbial biomass and enzyme activities under different land uses?**  
Dibyendu Chatterjee, Rukuosietuo Kuotsu, Merasenla Ao, Saurav Saha, Sanjay Kumar Ray and S. V. Ngachan
- 2055 **Determination of an effective pollinator for the rare and endangered *Urophysa rochkii* and the effects of its floral organs on flower visiting by insects**  
Pengfei Bie, Ting Tang, Jinyao Hu, Lushui Zhang and Qiuyue Zhao
- 2063 **Eco-geomorphic assessment of the Varanasi Turtle Sanctuary and its implication for Ganga River conservation**  
Gaurav Kailash Sonkar, Kumar Gaurav, Niladri Dasgupt, Syed Ainul Hussain and Rajiv Sinha
- 2071 **Erratum: Carbon storage potential of mangroves – are we missing the boat?**  
P. Ragavan, K. Sivakumar, R. S. C. Jayaraj, P. M. Mohan and T. S. Rana  
[Curr. Sci., 2019, 116(6), 889–891]

## RESEARCH COMMUNICATIONS

- 2072 **The DNzyme anti-insulin-like growth factor-IIP3 inhibited tumour growth in a mouse model of human hepatocarcinoma**  
Min Zhang, Chun-Li Mei and Ji-Dong Liu
- 2077 **Fluoride removal by novel composite material and its performance in the fixed-bed column filter**  
Mahipal, Hasan Ahmed Faisal, Arkamitra Kar and Trishikhi Raychoudhury



- 2083 **Evaluation of high rate MBBR to predict optimal design parameters for higher carbon and subsequent ammoniacal nitrogen removal**  
Sandip Magdum and V. Kalyanraman
- 2089 **Empirical modelling for retrieval of foliar traits in cotton crop using spatial data**  
Ramandeep Kaur M. Malhi and G. Sandhya Kiran
- 2097 **Consumption rate and predatory preference of the predaceous mite, *Neoseiulus californicus* to *Tetranychus urticae* and *Eotetranychus lewisi* on strawberry in California, USA**  
Paramjit Kaur and Frank G. Zalom

---

#### BOOK REVIEWS

- 2102 **Annual Review of Nuclear and Particle Science, 2018.** Barry R. Holstein, Wick C. Haxton and Abolhassan Jawahery (eds); *reviewed by* B. Ananthanarayan
- 2104 **Indian Science: Transforming India – Impact of Science in Independent India.** L. S. Shashidhara (ed.); *reviewed by* Sanjay A. Pai

---

#### PERSONAL NEWS

- 2106 **Sydney Brenner (1927–2019)**  
Kavita Babu and Sandhya P. Koushika
- 



- ◀ COVER. Flowering stage of the rare and endangered *Urophysa rochkii*. See page 2055.

Indexed in CURRENT CONTENTS/GEODATABASE/CHEMICAL ABSTRACTS/IndMED/SCOPUS/  
WEB OF SCIENCE