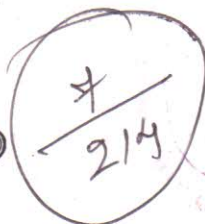


# JOURNAL OF NONLINEAR ANALYSIS AND APPLIED MATHEMATICS

Volume 6 • Number 1 • January-June 2017

## CONTENTS



A New Tool for Rough Approximation in Smooth Fuzzy Topological Space	1-7
• D. ANITHA DEVI	
Class $A_k$ Operators	9-14
• N. JAYANTHI & D. SUMATHI	
On Upper and Lower $T$ -Irresolute Smooth Fuzzy Multifunctions	15-21
• T. NITHIYA	
On $\gamma^{**}$ -Continuous Functions	23-31
• G. THANGARAJ	
Contraction * Mapping Theorem for Intuitionistic Fuzzy Metric Spaces	33-39
• M. K. UMA	
Somewhat $b$ - $I$ -Continuous and Somewhat $b$ - $I$ -Open Functions in Ideal Topological Spaces	41-48
• A. VADIVEL & MOHANARAO NAVULURI	
Some Contra Open Functions Via Semipreopen and Preopen Sets in Topology	49-54
• GOVINDAPPA NAVALAGI, M. SAVITA & M. SUJATA	
Some Generalized Continuous Functions Via Generalized Semipre-Open Sets	55-60
• GOVINDAPPA NAVALAGI, R. G. CHARANTIMATH & NAGARAJAPPA C. S.	
Some More Properties of $\beta$ -open and $\beta$ -Closed Sets in Topology	61-68
• GOVINDAPPA NAVALAGI & VIDYA N. TALAGERI	
Some More Properties of $\beta$ -Continuous Functions	69-75
• GOVINDAPPA NAVALAGI & VIDYA N. TELAGERI	
Some More Properties of $\beta$ -open and $\beta$ -Closed Sets in Topology	77-84
• Govindappa Navalagi & Vidya N. Talageri	